



**S21 Pro - 234 TH**

**Product Manual**

**Document Version 1.0**

**Jul. 2025**

## Copyright & Disclaimer – OneMiners.com

© OneMiners.com, 2025. All rights reserved.

This manual contains both official documentation provided by the manufacturer (Bitmain) and additional materials created by OneMiners.com, including but not limited to profitability calculators, hosting service information, setup categories, and platform-specific guidance.

The original manufacturer manuals remain the exclusive property of their respective copyright holders. They are included here solely for reference and convenience to OneMiners.com customers. No ownership of such content is claimed by OneMiners.com.

All supplemental sections, tools, and explanatory materials developed by OneMiners.com are protected by copyright and may not be copied, modified, or redistributed without prior written permission from OneMiners.com.

Information in this manual is provided “as is” and may be subject to change without prior notice. While every effort has been made to ensure accuracy, OneMiners.com makes no warranties, express or implied, regarding completeness, accuracy, or fitness for a particular purpose. Customers should always confirm the latest specifications and updates with the original manufacturer.

Use of profitability calculators, hosting information, and related tools is for guidance only and does not constitute financial advice. OneMiners.com is not liable for any losses, damages, or misinterpretations arising from the use of this manual or associated tools.

All product names, trademarks, and brand references belong to their respective owners.

# Table of Contents

Document Version 1.0.....	0
Copyright & Disclaimer – OneMiners.com.....	1
1. Overview.....	4
<b>1. Overview.....</b>	<b>4</b>
1.1 S21 XP Server Components.....	5
APW171215 Power Supply:.....	5
Notes:.....	7
1. Overview.....	7
<b>2. Setting up the Server.....</b>	<b>8</b>
To set up the server:.....	8
<b>3. Configuring the Server.....</b>	<b>11</b>
Setting up the Pool.....	11
To configure the server:.....	11
<b>4. Monitoring Your Server.....</b>	<b>12</b>
To check the operating status of your server:.....	12
<b>5. Administering Your Server.....</b>	<b>13</b>
5.1 Checking Your Firmware Version.....	13
To check your firmware version:.....	13
5.2 Upgrading Your System.....	13
5.3 Modifying Your Password.....	14
To change your login password:.....	14
5.4 Restoring Initial Settings.....	14
To restore your initial settings.....	14
FCC Notice (FOR FCC CERTIFIED MODELS):.....	17
Note:.....	17
EU WEEE: Disposal of Waste Equipment by Users in Private Household in the European Union.....	17
<b>6. OneMiners Enhanced Manual.....</b>	<b>18</b>
Miner Details (OneMiners Platform).....	18
Pool Settings.....	20
Earnings & Fees.....	20
Hardware Status.....	21
<b>7. OneMiners Warranty.....</b>	<b>22</b>
7-Year Extended Warranty.....	22
Circlehash Group Data Centers.....	22
Warranty Coverage.....	22
Exclusions.....	22
Claim Process.....	22

---

<b>8. Wallet.....</b>	<b>23</b>
Automatic Mining Balance.....	23
Withdrawal.....	24
Exchange.....	25
<b>9. AI Smart Mining.....</b>	<b>26</b>
What is AI Smart Mining?.....	26
How It Works.....	26
Control on Dashboard.....	26
Daily Profitability Calculations (AsicProfit.com).....	27
Additional Notes.....	28
Contact & Support.....	29

## 1. Overview

The S21 XP server is Bitmain's newest version in the 21 server series. Power supply APW171215 is part of S21 XP server. All S21 XP servers are tested and configured prior to shipping to ensure easy set up.



**Front View**



**Back View**



1. **Caution:**
2. Please refer to the layout above to place your goods in usage in case of any damage.
3. The equipment must be connected to an earthed mains socket-outlet. The socket-outlet shall be installed near the equipment and shall be easily accessible.
4. The equipment has two power inputs, only by connecting those two power supply sockets simultaneously can the equipment run. When the equipment is powered off, be sure to power off all power inputs.
5. DO NOT remove any screws and cables tied on the product. DO NOT PRESS the metal button on the cover.
6. Please note that the actual server shall prevail.

### 1.1 S21 XP Server Components

The main components and controller front panel of S21 XP servers are shown in the following figure:



#### APW171215 Power Supply:



- 1.
- 2.

One ANTWIRE-20SP power cord is needed and should be connected to PDU.

## 1.2 Specification

Model: S21

XP Version: 10

Product Glance	Value
Model	S21 XP
Version	10
Crypto algorithm/coins	SHA256   BTC/BCH/BSV
Typical Hashrate, TH/s <sup>(1-1)</sup>	270
Power on wall @25°C <sup>(1-2)</sup> , Watt <sup>(1-1)</sup>	3645

Detailed Characteristics	Value
<b>Power supply</b>	
Power supply AC input voltage <sup>(2-1)</sup> , Volt	220~277V AC
Power supply AC Input Frequency Range, Hz	50~60
Power supply AC Input current <sup>(2-2)</sup> , Amp	20
<b>Hardware Configuration</b>	
Network connection mode	RJ45 Ethernet 10/100M
Server size (Length*Width*Height, w/o package), mm	449*219*293
Server size (Length*Width*Height, with package), mm	640*360*450
Net weight, kg	18.7
Gross weight, kg	21.5
Noise <sup>(2-3)</sup> , dBA	76
<b>Environment Requirements</b>	
Operation temperature, °C	-20~45
Storage temperature, °C	-20~70
Operation humidity, RH	10%~90%
Operation altitude <sup>(2-4)</sup> , m	≤2000

**Notes:**

(1-1) The Hashrate value, Power on wall, and Power efficiency on wall are all typical values, The actual Hashrate value fluctuates by  $\pm 3\%$ , and the actual Power on wall and Power efficiency on wall fluctuate by  $\pm 5\%$ .

(1-2) Inlet air temperature.

(2-1) Caution: Wrong input voltage may probably cause server damaged.

(2-2) Single-phase AC input 20A.

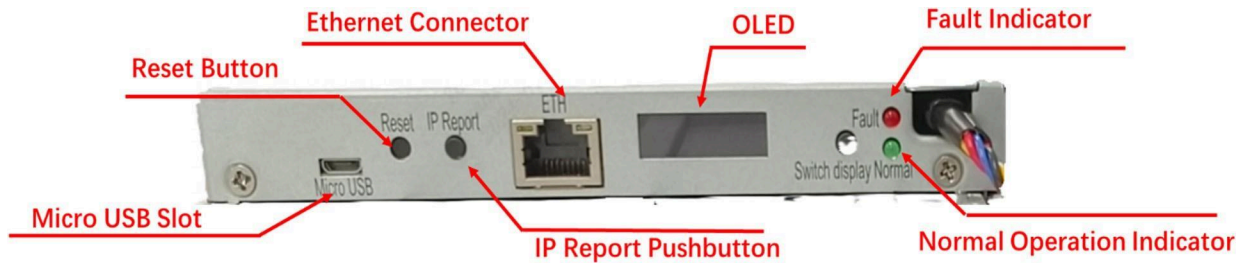
(2-3) Max condition: Fan is under max RPM(rotation per minute).

(2-4) When the server is used at an altitude from 900m to 2000m, the highest operating temperature decreases by  $1^{\circ}\text{C}$  for every increase of 300m.

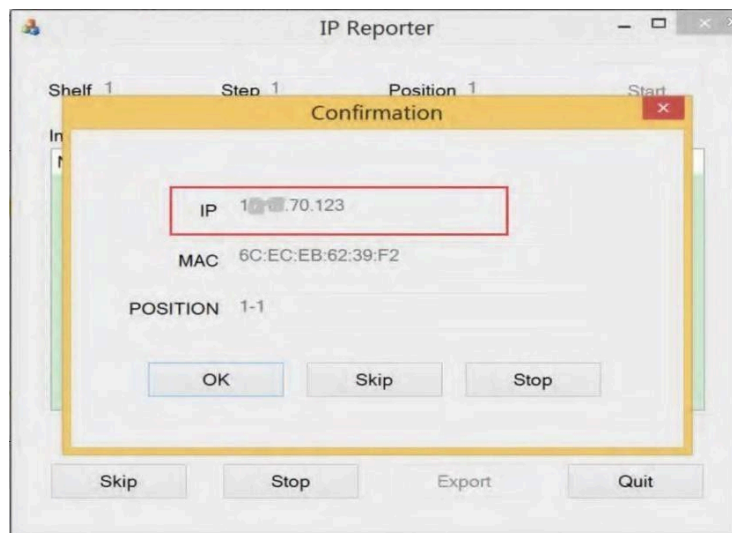


2.Setting up the Server

6. On the controller board, click the IP Report button. Hold it down until it beeps (about 5 seconds).

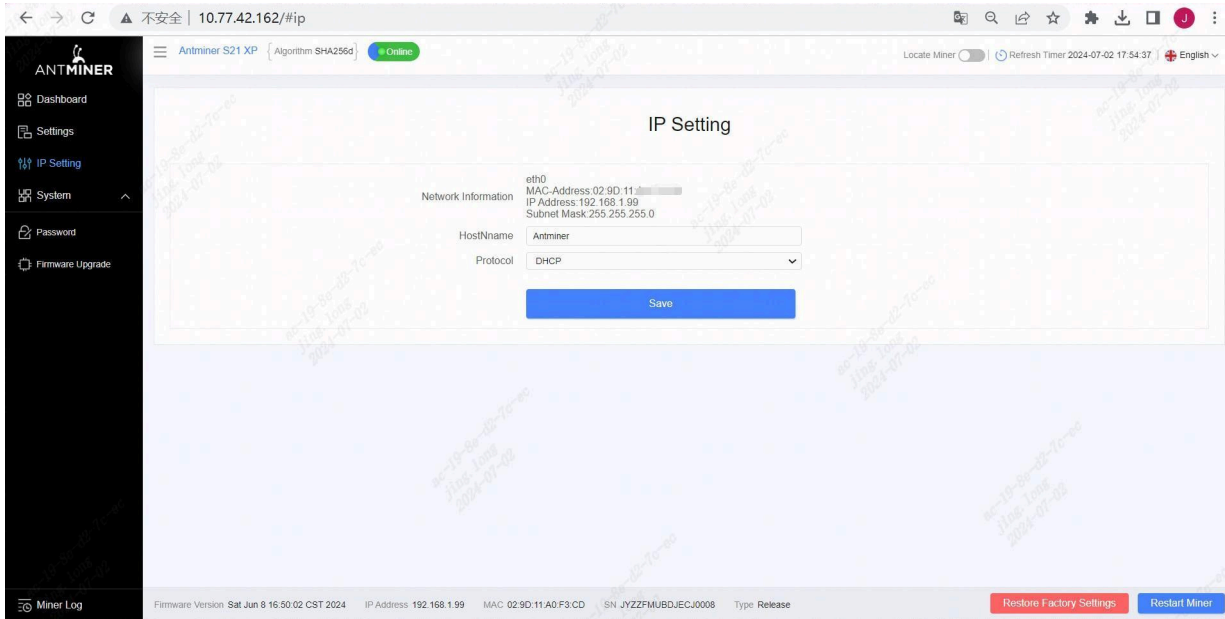


The IP address will be displayed in a window on your computer screen.



7. In your web browser, enter the IP address provided.
8. Proceed to login using root for both the username and password.
9. In the Protocol section, you can assign a Static IP address (optional).
10. Enter the IP address, Subnet mask, gateway and DNS Server.
11. Click "Save".

## 2. Setting up the Server

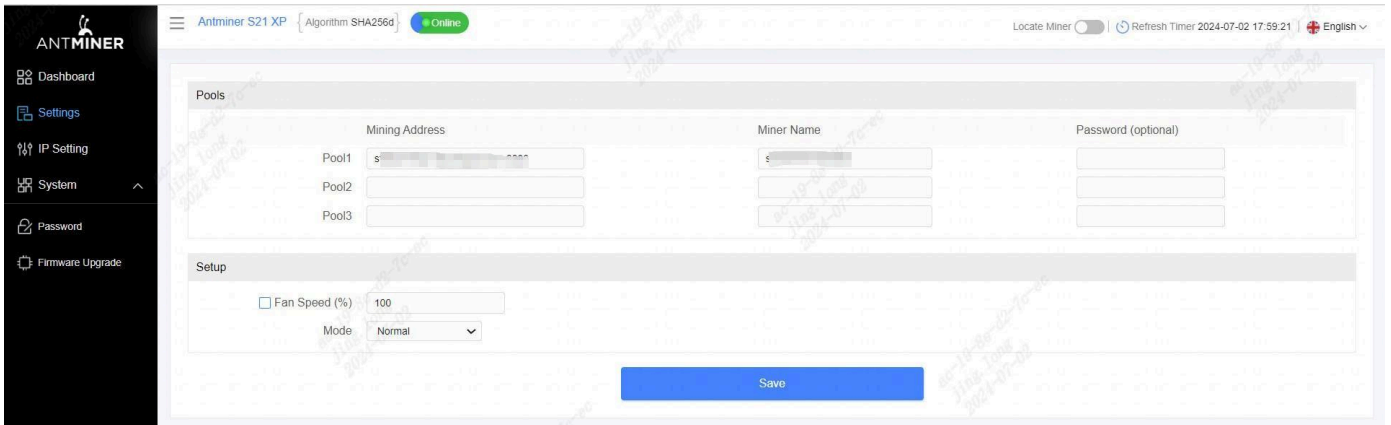


### 3. Configuring the Server

#### Setting up the Pool

To configure the server:

1. Click **Settings** as below.



2. Set the options according to the following table:

i

- 1.

- 2.

Option	Description
Mining address	Enter the address of your desired pool.  <div style="border: 1px solid black; border-radius: 10px; padding: 5px; margin: 5px 0;">                         The S21 XP servers can be set up with three mining pools, with decreasing priority from the first pool (pool 1) to the third pool (pool 3). The pools with low priority will only be used if all higher priority pools are offline.                     </div>
Name	Your worker ID on the selected pool.
Password (optional)	The password for your selected worker.

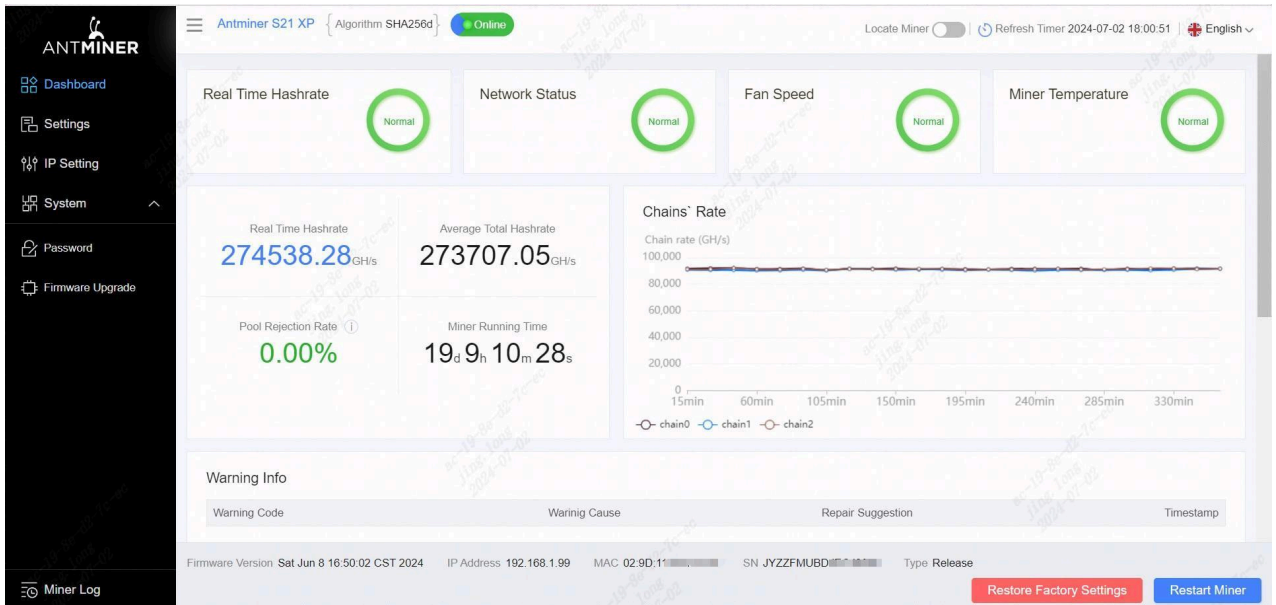
3. Click **Save** after the configuration.



## 4. Monitoring Your Server

To check the operating status of your server:

1. Click dashboard marked below to check the server status (taking S21 XP 270T as example).



2. Monitor your server according to the descriptions in the following table:

Option	Description
Number of chips	Number of chips detected in the chain.
Frequency	ASIC frequency setting.
Real Hashrate	Real-time Hashrate of each hash board (GH/s).
Inlet Temp	Temperature of the inlet (°C).
Outlet Temp	Temperature of the outlet (°C).
Chip state	One of the following statuses will appear: <ul style="list-style-type: none"> <li>● <b>The Green Icon</b> - indicates normal</li> <li>● <b>The Red Icon</b>- indicates abnormal</li> </ul>

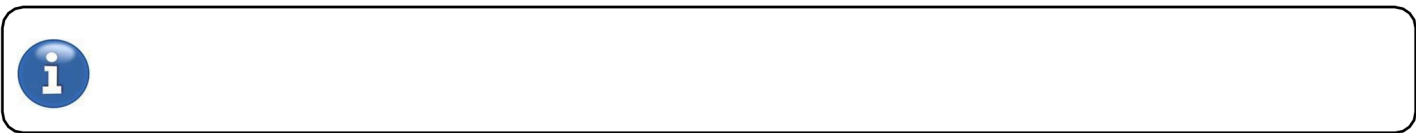
## 5. Administering Your Server

### 5.1 Checking Your Firmware Version

To check your firmware version:

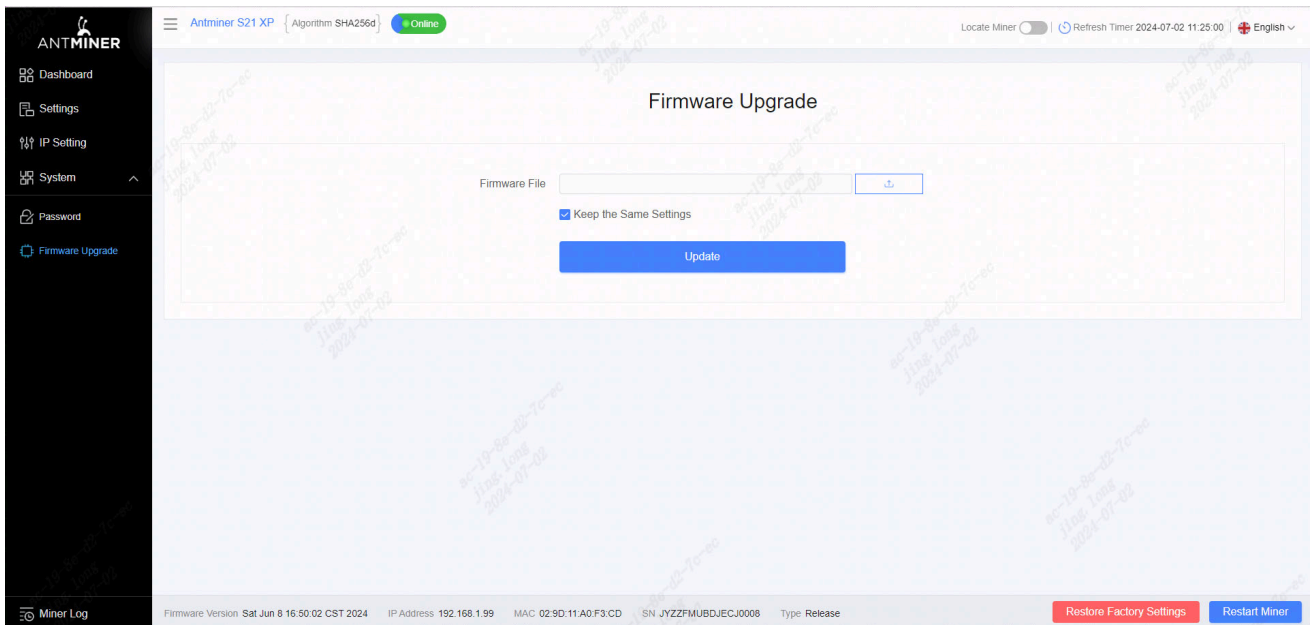
1. Enter the backstage of your server, find the firmware version on the bottom.
2. **Firmware Version** displays the date of the firmware your server uses. In the examples below, the server is using firmware version 20240608.

### 5.2 Upgrading Your System



To upgrade the server's firmware:


1. In **System**, click **Firmware Upgrade**.



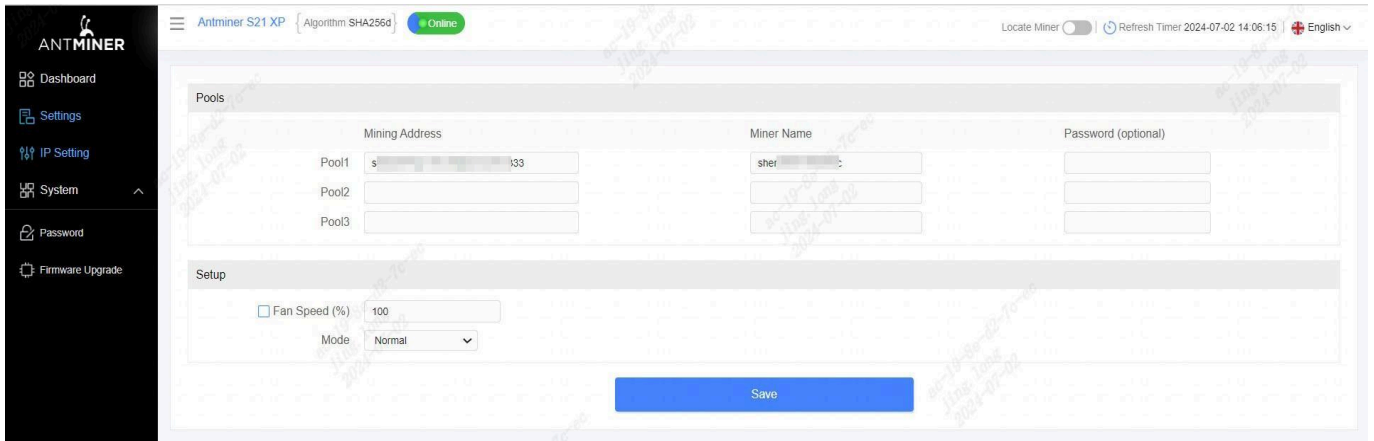
## 5. Administering Your Server

### 2. For **Keep Settings**:

- Select “keep settings” to keep your current settings (default).
- Unselect “keep settings” to reset the server to default settings.

3. Click the  button and navigate to the upgrade file. Select the upgrade file, then click **Update**.

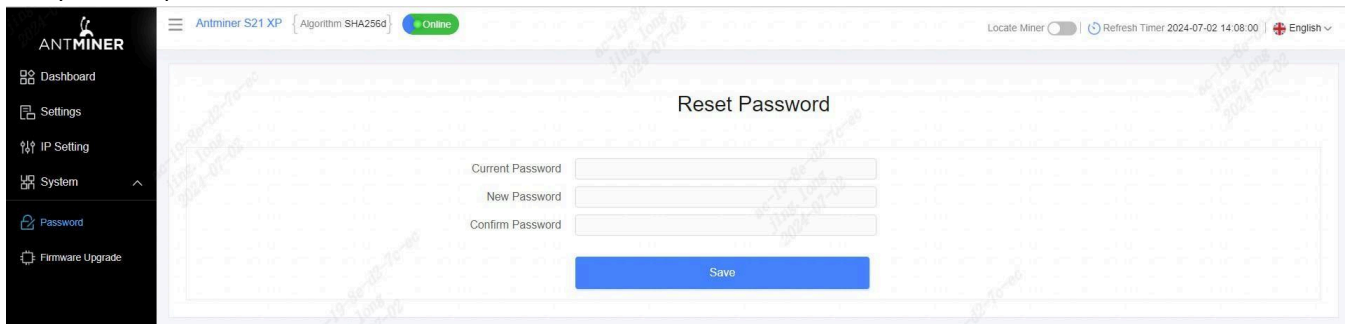
4. When the upgrade is completed, restart the server and it will turn to the setting page.



### 5.3 Modifying Your Password

To change your login password:

1. In **System**, click the **Password** tab.
2. Set your new password, then click **Save**.



### 5.4 Restoring Initial Settings

To restore your initial settings

1. Turn on the server and let it run for 5 minutes.
2. On the controller front panel, press and hold the **Reset** button for 10 seconds



Resetting your server will reboot it and restore its default settings. The red LED will automatically flash once every 15 seconds if the reset is operated successfully.

## Environmental Requirements

Please run your server in accordance with the following requirements

### 1. Basic Environmental Requirements:

#### 1.1 Climatic Conditions:

Description	Requirement
Operating Temperature	-20-45°C
Operating Humidity	10-90%RH (non-condensing)
Storage Temperature	-20-70°C
Storage Humidity	5-95%RH (non-condensing)
Altitude	≤2000m

#### 1.2 Site Requirements of the Server Running Room:

Please keep the server running room away from industrial pollution sources:

For heavy pollution sources such as smelters and coal mines, the distance should be more than 5km.

For moderate pollution sources such as chemical industries, rubber and electroplating industries, the distance should be more than 3.7km.

For light pollution sources such as food factories and leather processing factories, the distance should be more than 2km. If unavoidable, the site should be chosen in the perennial upwind direction of the pollution source.

Please do not set your location within 3.7km from the seaside or the salt lake. If unavoidable, it should be built as airtight as possible, equipped with air conditioning for cooling.

#### 1.3 Electromagnetic Environmental Conditions:

Please keep your site away from transformers, high-voltage cables, transmission lines and high-current equipment, for example, there should be no high-power AC transformers (>10KA) within 20 meters, and no high-voltage power lines within 50 meters. Please keep your site away from high-power radio transmitters, for example, there should be no high-power radio transmitters (>1500W) within 100 meters.

### 2. Other Environmental Requirements :

The server running room shall be free of explosive, conductive, magnetically conductive and corrosive dust. The requirements of mechanical active substances are shown below:

#### 2.1 Requirements of Mechanical Active Substances

Mechanical Active Substance	Requirement
Sand	≤ 30mg/m <sup>3</sup>
Dust (suspended)	≤ 0.2mg/m <sup>3</sup>
Dust (deposited)	≤ 1.5mg/m <sup>2</sup> h

## 2.2 Requirements of Corrosive Gas

Corrosive Gas	Unit	Concentration
H <sub>2</sub> S	ppb	< 3
SO <sub>2</sub>	ppb	< 10
Cl <sub>2</sub>	ppb	< 1
NO <sub>2</sub>	ppb	< 50
HF	ppb	< 1
NH <sub>3</sub>	ppb	< 500
O <sub>3</sub>	ppb	< 2

Note: ppb (part per billion) refers to the unit of concentration, 1ppb stands for the volume ratio of part per billion.

**Regulations:****FCC Notice (FOR FCC CERTIFIED MODELS):**

This device complies with part 15 of the FCC Rules. Operation is subject to the following two conditions: (1) This device may not cause harmful interference, and (2) this device must accept any interference received, including interference that may cause undesired operation.

**Note:**

This equipment has been tested and found to comply with the limits for a Class A digital device, pursuant to part 15 of the FCC Rules. These limits are designed to provide reasonable protection against harmful interference when the equipment is operated in a commercial environment. This equipment generates, uses, and can radiate radio frequency energy and, if not installed and used in accordance with the instruction manual, may cause harmful interference to radio communications. Operation of this equipment in a residential area is likely to cause harmful interference in which case the user will be required to correct the interference at his own expense.

**EU WEEE: Disposal of Waste Equipment by Users in Private Household in the European Union**

This symbol on the product or on its packaging indicates that this product must not be disposed of with your other household waste. Instead, it is your responsibility to dispose of your waste equipment by handling it over to a designated collection point for the recycling of waste electrical and electronic equipment. The separate collection and recycling of your waste equipment at the time of disposal will help to conserve natural resources and ensure that it is recycled in a manner that protects human health and the environment. For more information about where you can drop off your waste equipment for recycling, please contact your local city office, your household waste

disposal service or the shop where you purchased the product.

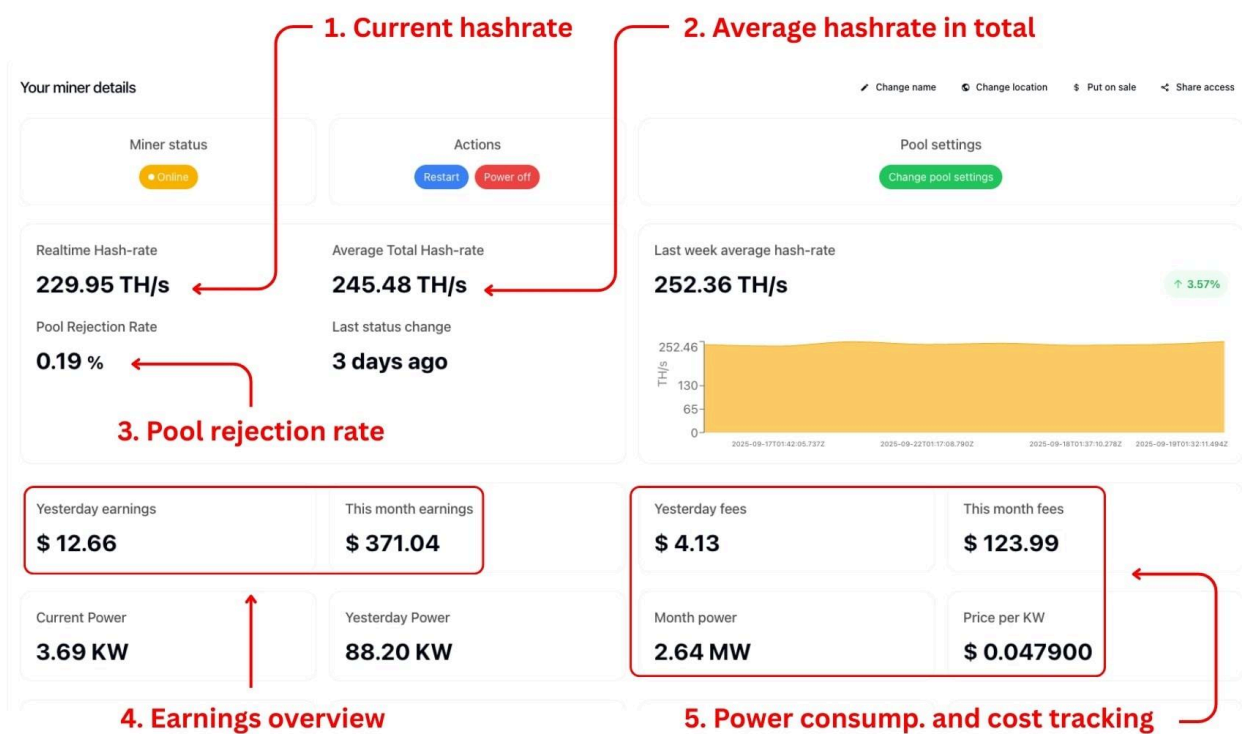
# OneMiners Enhanced Manual

(Official Bitmain manual with integrated OneMiners platform insights)

**Note:** All illustrations and values shown are for demonstration purposes only. Actual figures in the OneMiners platform may vary depending on the specific ASIC miner model and configuration.

[www.oneminers.com](http://www.oneminers.com)

## Miner Details (OneMiners Platform)



1. OneMiners Platform v1.2 - Miner Details

### 1. Realtime Hash-rate

- Displays the current hashrate of the miner in terahashes per second (TH/s).
- This value fluctuates in real time depending on network stability, hardware performance, and pool communication.

### 2. Average Total Hash-rate

- Shows the miner's average hashrate over a longer period, typically 24 hours.
- Provides a more reliable measure of overall performance compared to realtime spikes.

### 3. Pool Rejection Rate

- Percentage of submitted shares rejected by the mining pool.
- A low rejection rate (below 1%) indicates stable pool communication and efficient mining.
- Higher rates may suggest network latency, misconfiguration, or hardware issues.

### 4. Earnings Overview

- Displays estimated earnings for the selected period (daily, weekly, or monthly).
- Earnings are calculated based on accepted shares submitted to the mining pool.

### 5. Power Consumption and Cost Tracking

- Shows real-time and historical energy usage of the miner in kilowatts (kW) and megawatts (MW).
- Tracks electricity costs based on your configured price per kWh, helping you calculate net profitability.

### 6. How to Interpret These Numbers

- Compare realtime and average hashrates to ensure consistent performance.
- Keep rejection rate as low as possible to maximize earnings.
- Track electricity usage and costs regularly, as power efficiency is crucial for ROI.
- Use earnings vs. costs comparison to determine whether adjustments in hosting or settings are needed.



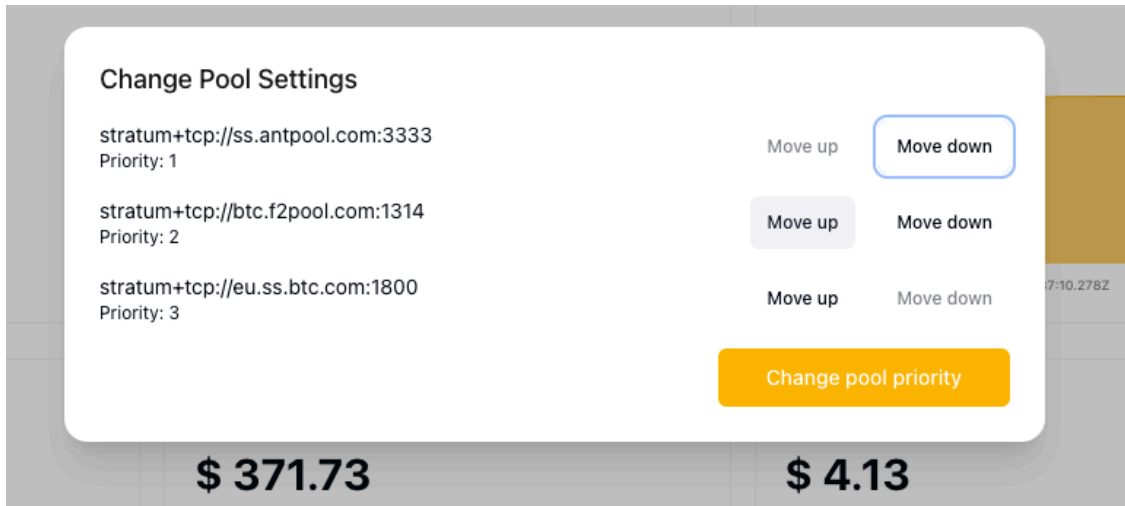
2. Packaging of Antminer S21 Pro - 234 TH in person.



3. Antminer S21 Pro - 234 TH in person.

## Pool Settings

- The miner can be connected to up to three mining pools at once.
- Pools are listed in order of priority: if the first pool is unavailable, the miner will automatically switch to the second, and then to the third.
- Priority is set by simply arranging the pools in order; the top position is always the primary pool.



4. OneMiners platform v1.2 - Pool Settings

## Earnings & Fees

### Earnings

- Shows daily, monthly, and cumulative mining rewards in USD (or selected currency).
- Based on the miner's hashrate, accepted shares, and pool performance.

### Fees

- Displays pool or platform fees deducted from earnings.
- Calculated on a daily and monthly basis for transparency.

### Net Result

- The difference between gross earnings and fees represents your net mining income. Allows you to quickly assess profitability at a glance.

Yesterday earnings <b>\$ 13.03</b>	This month earnings <b>\$ 371.73</b>	Yesterday fees <b>\$ 4.13</b>	This month fees <b>\$ 123.99</b>
Current Power <b>3.66 KW</b>	Yesterday Power <b>88.20 KW</b>	Month power <b>2.64 MW</b>	Price per KW <b>\$ 0.047900</b>

5. OneMiners platform - Earnings & Fees

# Hardware Status

## Network Status

- Indicates whether the miner is successfully connected to the selected pool(s).
- Any disconnection warnings should be addressed immediately to avoid downtime.

## Fan Speed

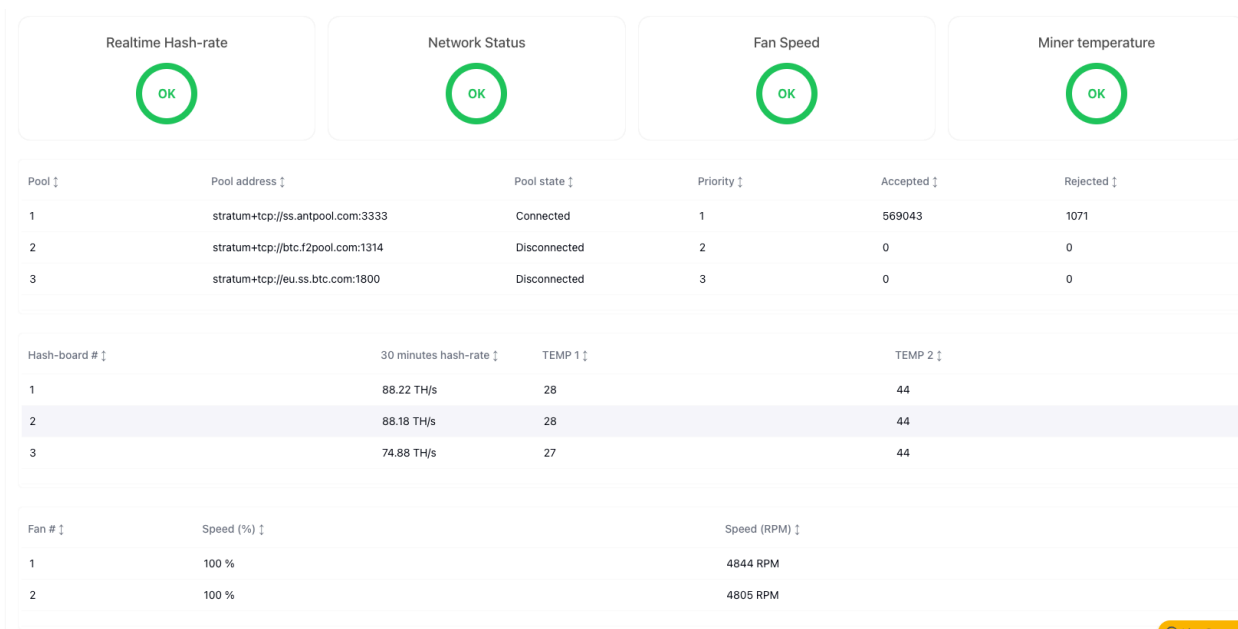
- Displays percentage and RPM of each cooling fan.
- Proper airflow is critical for maintaining optimal temperature and preventing overheating.

## Miner Temperature

- Reports the current operating temperature of each hash board.
- Keeping temperatures within recommended ranges ensures stability and extends hardware lifespan.

## Hash-board Level Monitoring

- Provides detailed performance data per board, including hashrate and temperature.
- Useful for diagnosing imbalances or early signs of hardware degradation.



6. OneMiners platform v1.2 - Hardware status

## OneMiners Warranty

### 7-Year Extended Warranty

- All mining machines hosted within OneMiners data centers are eligible for up to **7 years of extended warranty coverage**.
- The warranty applies exclusively when the machines are operated inside officially managed facilities, ensuring professional maintenance, stable electricity, and optimal environmental conditions.

### Circlehash Group Data Centers

- The same **7-year warranty** may also apply when machines are operated within data centers managed by trusted partners from the Circlehash Group.

### Warranty Coverage

- Covers manufacturing defects, hardware malfunctions, and replacement of faulty components under normal operation.
- Requires that miners are used in compliance with official guidelines and maintained within the hosted environment.

### Exclusions

- Machines operated outside OneMiners or Circlehash Group data centers are not eligible for extended warranty.
- Damage caused by unauthorized modifications, external tampering, or improper usage is not covered.

### Claim Process

- To initiate a warranty claim, customers must contact [OneMiners support](#) with the machine's hosting details and service ID.
- Repairs or replacements will be processed through OneMiners' repair service team.

## Wallet

### Automatic Mining Balance

- From the very first moment your miner is installed and activated, it begins generating mining rewards.
- Even if no energy payments are preloaded into your wallet, mining continues.
- In such cases, the system automatically deducts energy costs and fees from the generated rewards.
- If funds are preloaded into the wallet in advance, earnings are credited without automatic deductions.
- You are able to change your wallet address in the wallet settings.

**Action Buttons**

↓

Deposit Withdrawal Exchange Transactions

Asset	Holdings	Estimated	
<b>Bitcoin</b> BTC	0.342006 BTC	\$38 574.12	<a href="#">Settings</a>
<b>Kaspa</b> KAS	286 397 KAS	\$22 432.29	<a href="#">Settings</a>
<b>Dogecoin</b> DOGE	6 355.58 DOGE	\$1 521.3	<a href="#">Settings</a>
<b>Litecoin</b> LTC	7.790449 LTC	\$823.38	<a href="#">Settings</a>
<b>Handshake</b> HNS	141 722.45 HNS	\$813.76	<a href="#">Settings</a>
<b>Alephium</b> ALPH	705.6 ALPH	\$120.44	<a href="#">Settings</a>
<b>Radiant</b> RXD	213 299.36 RXD	\$66.9	<a href="#">Settings</a>
<b>Energy &amp; fees balance</b> USDT	28.95 USDT	\$28.95	

**AutoEnergy**

If your energy wallet balance goes negative, mined coins will automatically convert to USDT to cover energy fees and keep your miners running without interruption. To avoid this, ensure your USDT wallet has enough funds for energy payments.

↖ **Wallet Settings**

### 7. OneMiners Platform v1.2 - Wallet Section.

286 397 KAS
\$22 432.29

**Wallet Settings**

Choose from these wallet settings

Change payout address

Change payout frequency

705.6 ALPH
\$120.44

### 8. OneMiners Platform v1.2 - Changing your payout wallet address.

## Withdrawal

- Navigate to: **Wallet > Withdrawal**
- Add a **crypto wallet address** or **bank account**.
- Select the **currency**, enter the **amount**, and confirm.
- Funds will be withdrawn quickly and securely to your chosen destination.

Unpaid \$72.54 | Total balance \$64 352.2

1. Click on "Withdrawals"

Deposit | **Withdrawal** | Exchange | Transactions

Asset	Holdings	Estimated	
Bitcoin BTC	0.342006 BTC	\$38 574.12	Settings
Kaspa KAS	286 397 KAS	\$22 432.29	Settings
Dogecoin DOGE			Settings
Litecoin LTC			Settings
Handshake HNS			Settings
Alephium ALPH	705.6 ALPH	\$120.44	Settings
Radiant RXD	213 299.36 RXD	\$66.9	Settings
Energy & fees balance			

2. Choose your preferred destination

**Withdrawal**

Choose from these withdrawal options

- Crypto wallet
- Bank account

### 9. OneMiners Platform v1.2 - Withdrawal process

Unpaid \$72.54 | Total balance \$64 352.2

Deposit | **Withdrawal** | Exchange | Transactions

Asset	Holdings	Estimated	
Bitcoin BTC			Settings
Kaspa KAS			Settings
Dogecoin DOGE			Settings
Litecoin LTC			Settings
Handshake HNS			Settings
Alephium ALPH			Settings
Radiant RXD			Settings
Energy & fees balance USDT	28.95 USDT	\$28.95	

**Request withdrawal**

Withdrawal will usually be processed within 24 hours. You will be able to track the status of your withdrawal in the Transactions tab. After the withdrawal is processed, you will also obtain a transaction hash, which you can use to track the status of your withdrawal on the blockchain.

Enter withdrawal amount

0,0420033 | BTC

Address:  
1ML43MW87cWd4YV7kCURTjUj5vuhEBDTzR

Preview withdrawal

By clicking the button above, you agree to our [Terms of Service](#) and [Privacy Policy](#). By continuing, you will create a withdrawal preview order, which will fix all fees for 2 minutes. You will then be able to confirm the withdrawal request on the next screen.

### 10. OneMiners Platform v1.2 - Choose the currency and amount.

## Exchange

- Navigate to: **Wallet > Exchange**
- Select the currencies you want to exchange.
- Option also available to **convert directly into Energy & Fees Funds** for smooth miner operation.
- Enter the desired amount and confirm to complete the exchange instantly.

The screenshot shows the OneMiners wallet interface. At the top, there are tabs for Deposit, Withdrawal, Exchange, and Transactions. The Exchange tab is selected. Below the tabs, there is a table with columns for Asset, Holdings, and Estimated. The assets listed are Bitcoin (BTC), Kasper (KAS), Dogecoin (DOGE), Litecoin (LTC), Handshake (HNS), Alephium (ALPH), and Radiant (RXD). At the bottom, there is an Energy & fees balance section showing 28.95 USDT and \$28.95.

A modal window titled "Exchange assets" is open in the center. It contains the following text: "Exchanges are processed automatically within 20 minutes from exchange order confirmation. Be aware that exchange rate is fixed for 2 minutes after exchange order creation. If you do not confirm exchange order within 2 minutes, exchange will not be processed and will be expired." Below this text, there is a form with two input fields: "Enter withdrawal amount" with the value "0,00200628" and a dropdown menu for "BTC". Below that is a "Select destination wallet" dropdown menu with the value "KAS". A yellow button labeled "Preview exchange order" is at the bottom of the form. Below the button, there is a disclaimer: "By clicking the button above, you agree to our [Terms of Service](#) and [Privacy Policy](#). By continuing, you will create a exchange preview order, which will fix the exchange rate and exchange fees for 2 minutes. You will then be able to confirm the exchange transaction on the next screen."

Red annotations are present: "1. Click on 'Exchange'" with an arrow pointing to the Exchange tab, and "2. Choose currency and amount" with an arrow pointing to the input fields in the modal window.

11. OneMiners Platform v1.2 - Process of currency exchange in wallet.

## AI Smart Mining

### What is AI Smart Mining?

- AI Smart Mining is a feature that uses artificial intelligence to optimize your mining operations by selecting the most profitable pools and managing machines automatically.

### How It Works

- Continuously analyses market conditions and pool performance.
- Redirects mining power to maximize profitability.
- Improves efficiency by avoiding less profitable pools.

### Control on Dashboard

- You can easily **enable or disable AI Smart Mining** at any time directly from your **OneMiners dashboard**.

The screenshot displays the OneMiners dashboard interface. On the left is a navigation sidebar with the OneMiners logo and menu items: Dashboard, Buy miner, Workers, Wallet, Orders, Repairs, Referrals, Settings, News & Updates, and Premium Support. The main content area features several widgets: 'Start mining' and 'Browse marketplace' buttons at the top; a 'Total estimated balance' widget showing \$64380.92 with a progress bar; an 'AI Boost' widget where the toggle is turned on (labeled 'enabled') and the progress bar is at 100.00%; a 'Worker status' widget showing 'NONE' and 0.00%; an 'Estimated Unpaid Balance' widget showing 52.19 USD with a progress bar at 38.47%; and a 'Max Possible Hashrate' widget showing 215.63 PH/s. A red arrow points from the text 'Turn ON/OFF AI Smart Mining' to the AI Boost toggle switch.

12. OneMiners Platform v1.2 - AI Smart Mining settings in dashboard.

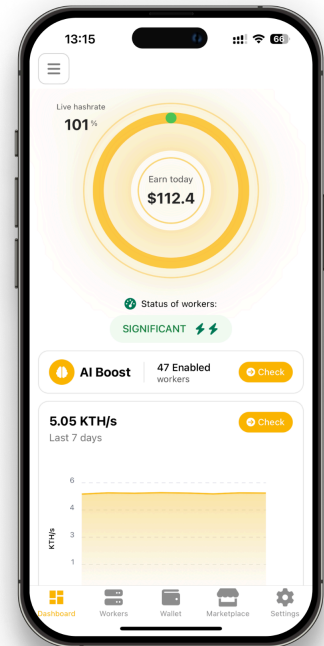
## OneMiners Smart App

### What is the OneMiners Smart App?

The OneMiners Smart App is a mobile application that allows you to remotely monitor and manage your ASIC miners anytime, anywhere. Thanks to our white-label hosting platform provider CircleHash LLC, the app is available for free download on both the App Store and Google Play.

### Key Features

- **Remote Control** – Start, stop, and adjust your miners directly from your phone.
- **Performance Monitoring** – View real-time hashrate, power consumption, and hardware status.
- **Wallet Access** – Easily manage balances, withdrawals, and transfers of mined cryptocurrencies.
- **User-Friendly Interface** – Simple design for both beginners and advanced users.

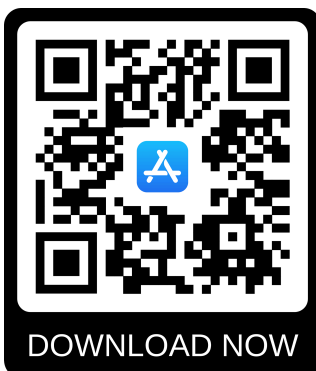


### Availability

Download the OneMiners Smart App for free on iOS ([App Store](#)) and Android ([Google Play](#)).

### Scan to Download

- iOS (App Store):



- Android (Google Play):



## Daily Profitability Calculations (AsicProfit.com)

- Shows estimated daily earnings in USD and BTC.
- Includes calculation of ROI (Return on Investment) based on miner purchase price, hashrate, and electricity cost.
- Data shown is valid as of **2025/09/22**.
- *Disclaimer: Profitability depends on network difficulty and coin market price. Always confirm updated results before making financial decisions.*

**Bitcoin** (SHA-256)  
Price: 112735.1 USD

</> 📄

---

Your hashrate (TH/s)

TH/s ▾

Power consumption (W)

Electricity price (USD)

---

Daily est. earnings (0.00010895 BTC):  
**+8.75 USD** ( + 3.52 USD)

Estimated ROI for 3 406.00 USD  
**12.78 month(s)**

Powered by AsicProfit®

13. Calculations of Daily Earnings & Estimated ROI - <https://www.asicprofit.com/>

### Profitability

	Daily	Monthly	Yearly
Income	\$ 11.73	\$ 357.09	\$ 4 285.12
Electricity	\$ 3.37	\$ 102.56	\$ 1 230.75
<b>Profit</b>	<b>\$ 8.36</b>	<b>\$ 254.53</b>	<b>\$ 3 054.37</b>

14. Profitability & Energy costs with 1M electricity rate of \$0.04 / kWh - <https://www.asicprofit.com/>

## Additional Notes

### Electricity Pricing

- Electricity is the largest ongoing expense for mining operations. Always negotiate the lowest possible kWh rate with your hosting provider or local supplier. - OneMiners Nigeria hosting for \$0.04 / kWh.
- Consider hosting options in countries with competitive electricity pricing to maximize ROI.
- Visit OneMiners Hosting site: <https://oneminers.com/pages/hosting-centers>

### Hosting with OneMiners

- OneMiners offers professional hosting services with locations across the USA, Europe, and the Middle East.
- Hosting ensures stable power supply, professional maintenance, and remote monitoring of your miners. Customers using OneMiners hosting benefit from optimized electricity pricing and dedicated support.

### Maintenance & Repairs

- Regular hardware maintenance is essential to maximize miner lifespan.
- Dust removal, fan checks, and thermal monitoring should be carried out regularly.
- For professional repair services, please contact our repair team directly.

### Platform Monitoring

- The OneMiners platform provides real-time statistics, profitability calculators, and hosting ROI tools.
- Users should frequently check miner status, temperature, and earnings to ensure stable operation.

### Disclaimer

- All profitability and ROI calculations shown in this manual are valid only as of the indicated date.
- Market conditions, electricity prices, and coin values fluctuate frequently; results should always be verified before making investment decisions.
- Screenshots from the OneMiners platform are provided for reference only; actual values may differ depending on miner type, configuration, and hosting environment.

## Contact & Support

For sales, technical assistance, and hosting inquiries, our team is available 24/7.

- **WhatsApp Support (24/7):** +1 305 867 6143
- **Repairs & Service:** +420 739 482 744
- **General Support (USA):** +1 607 9009 004
- **Emails:**
  - Sales: sales@oneminers.com
  - Business: business@oneminers.com
  - Service: service@oneminers.com
  - Payments: payinquire@oneminers.com

### Mailing Addresses:

- **United States – USA:** 701 Tillery St 12, Austin, 78702 Texas
- **Europe – Czechia:** Rostovska 260/2b, Prague, 110 00
- **Middle East – Dubai:** Sheikh Rashed Bin Saeed Al Maktoum Road, C1 Building, Ajman, UAE

Please visit our Contact page for more information - <https://oneminers.com/pages/contact>

Official email: info@oneminers.com  
Telephone: +1 607 9009 004

Scan this QR Code for any link you are looking for:

